



**SPLIT TYPE
AIR CONDITIONER
CASSETTE type (50Hz)**

**SERVICE
MANUAL**



Models

Indoor unit	Outdoor unit
AUG54FUAS	AOG54FMAYT
AUG54UUAS	AOG54UMAYT

CONTENTS

SPECIFICATIONS 1
OUTLINE AND DIMENSIONS 2
REFRIGERANT SYSTEM DIAGRAM 4
CIRCUIT DIAGRAM 5
INDOOR PCB CIRCUIT DIAGRAM 7
OUTDOOR PCB CIRCUIT DIAGRAM 9
ERROR CONTENTS 10
DISASSEMBLY ILLUSTRATION 11
PARTS LIST 21

SPECIFICATIONS

TYPE	COOLING	COOLING & HEATING
INDOOR UNIT	AUG54FUAS	AUG54UUAS
OUTDOOR UNIT	AOG54FMAYT	AOG54UMAYT
COOLING CAPACITY (kW)	14.5	14.5
HEATING CAPACITY (kW)	-----	16.5

ELECTRICAL DATA

POWER SOURCE		400 V	
FREQUENCY		50 Hz	
RUNNING CURRENT (A)	COOLING	9.50	9.50
	HEATING	-----	9.50
INPUT WATTS (kW)	COOLING	5.16	5.16
	HEATING	-----	5.30
E.E.R. (kW / kW)	COOLING	2.81	2.81
	HEATING	-----	3.11
STARTING CURRENT		70 A	
MOISTURE REMOVAL (ℓ/hr)		6.0	

COMPRESSOR

TYPE	Hermetic type, 2 pole, 3 phase, Induction motor, Scroll		
DISCRIMINATION	BN65YEAMT		
REFRIGERANT	R410A	(g)	3,300 3,500

FAN SPEED (r.p.m.)	INDOOR	HIGH	680	
		MED	580	
		LOW	500	
		S-LOW	300	
	OUTDOOR	780		
AIR FLOW (m³/h)	INDOOR	1,700		
	OUTDOOR	6,300		
DIMENSIONS H x W x D (mm)	INDOOR	296 x 830 x 830		
	GRILLE	35 x 940 x 940		
	OUTDOOR	1,290 x 900 x 330		
WEIGHT NET / GROSS (kg)	INDOOR	40 / 55		
	OUTDOOR	114 / 121	118 / 125	
MAX PIPE LENGTH / HEIGHT (m)		50 / 30		
REMOTE CONTROLLER TYPE		WIRED		

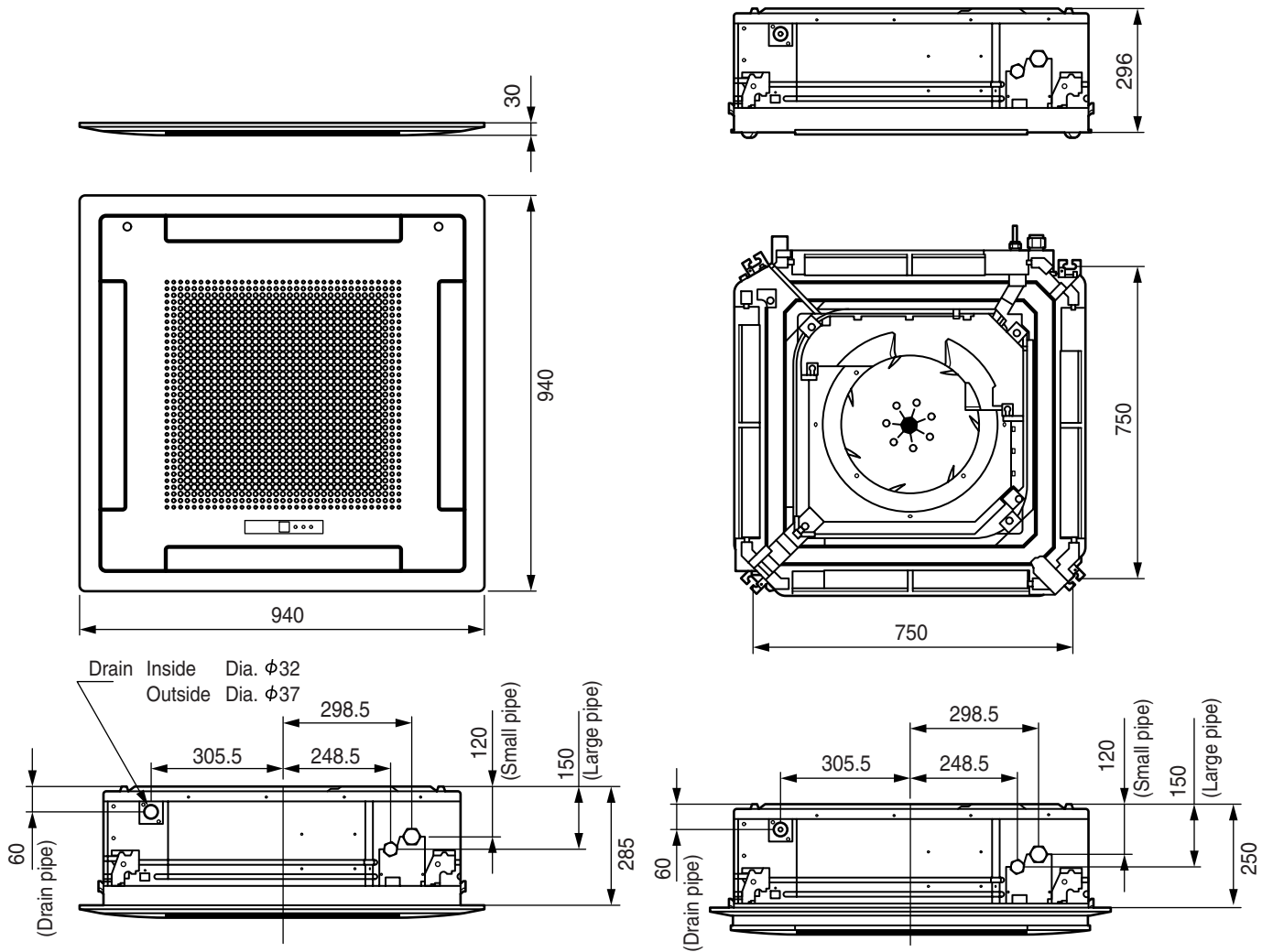
ADDITIONAL REFRIGERANT CHARGE (R410A)

FULL CHARGE AMOUNT	Pipe Length	20 m	3,300 g	3,500 g
		30 m	3,700 g	3,900 g
		40 m	4,100 g	4,300 g
		50 m	4,500 g	4,700 g
ADDITIONAL CHARGE		40 g / m		

OUTLINE AND DIMENSIONS

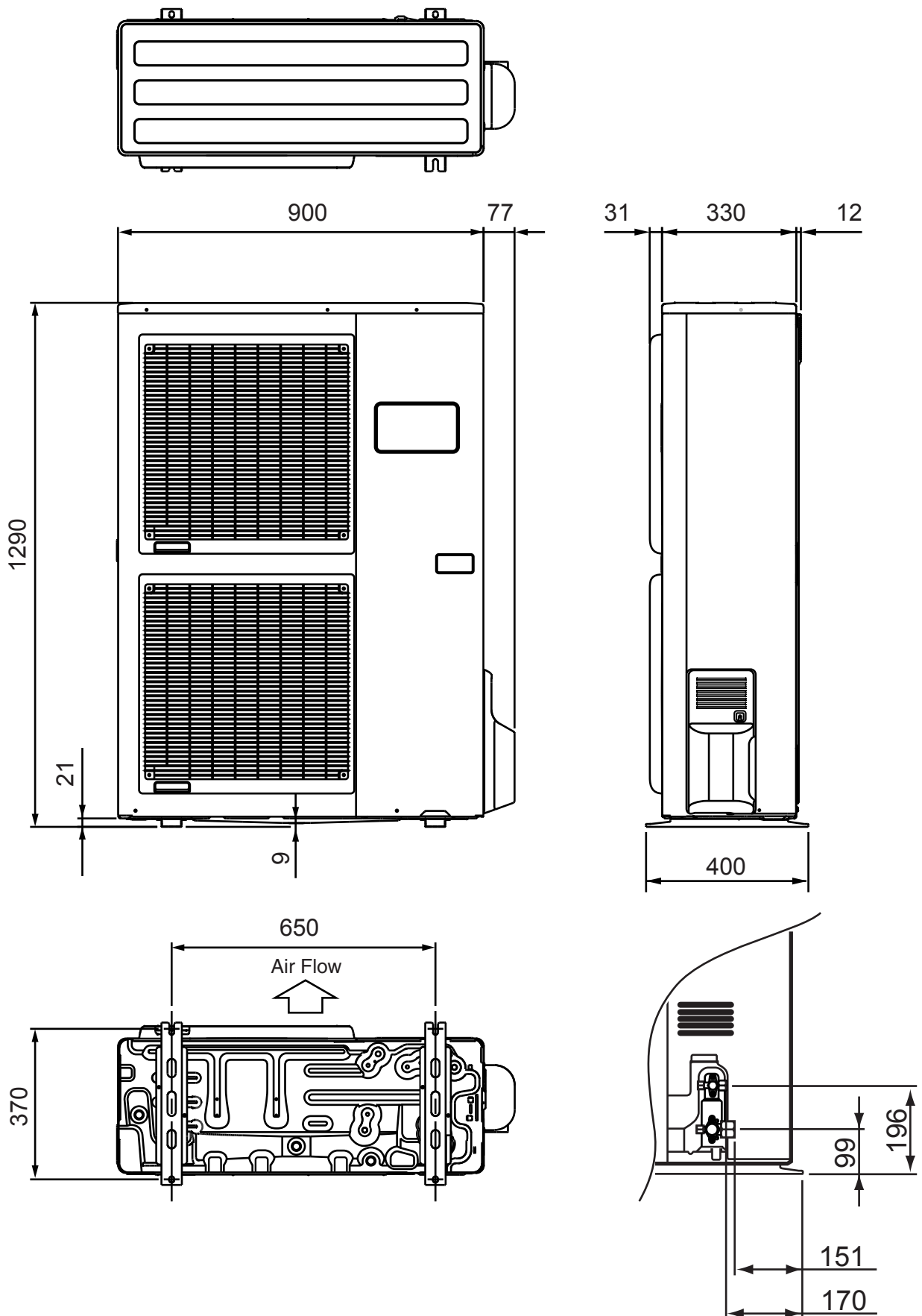
INDOOR UNIT (Unit : mm)

Models : **AUG54FUAS**
AUG54UUAS



OUTDOOR UNIT (Unit : mm)

Models : AOG54FMAYT
AOG54UMAYT

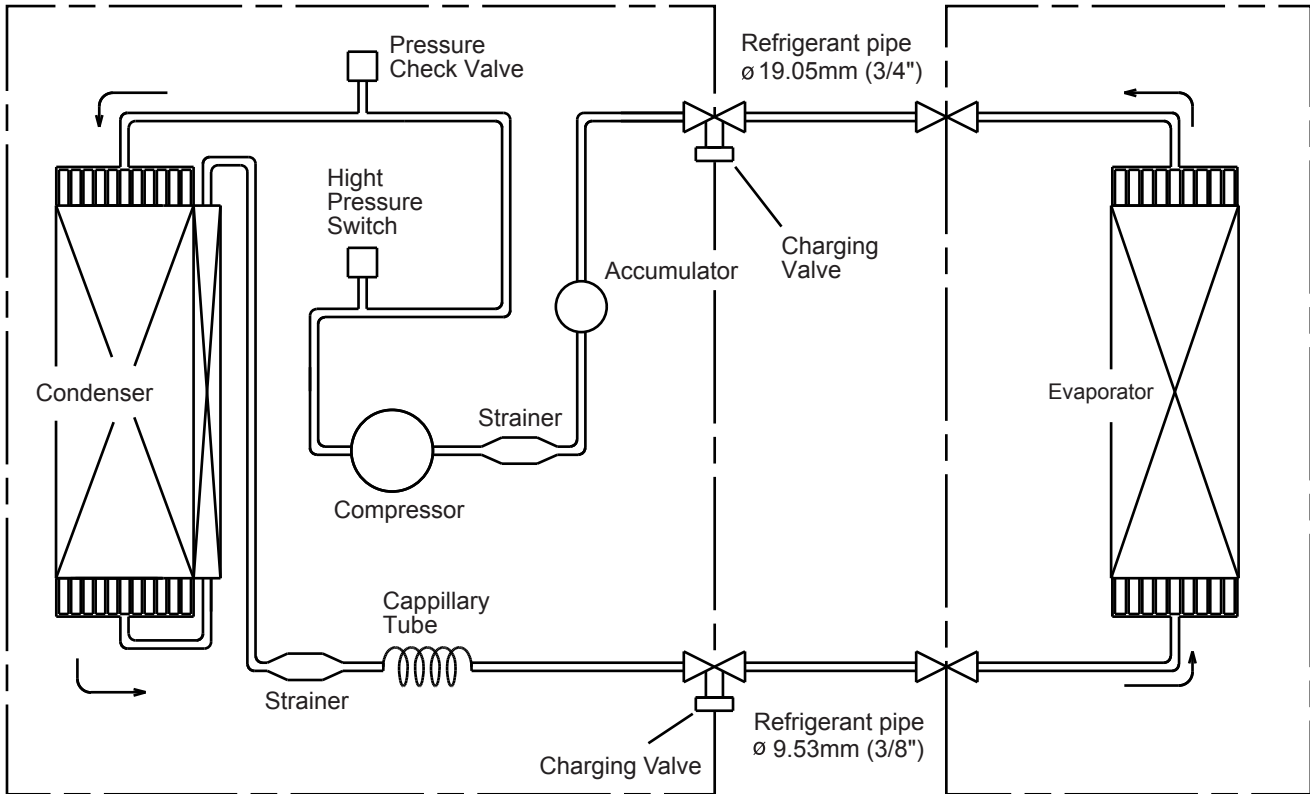


REFRIGERANT SYSTEM DIAGRAM

Models : AUG54FUAS / AOG54FMAYT

OUTDOOR UNIT

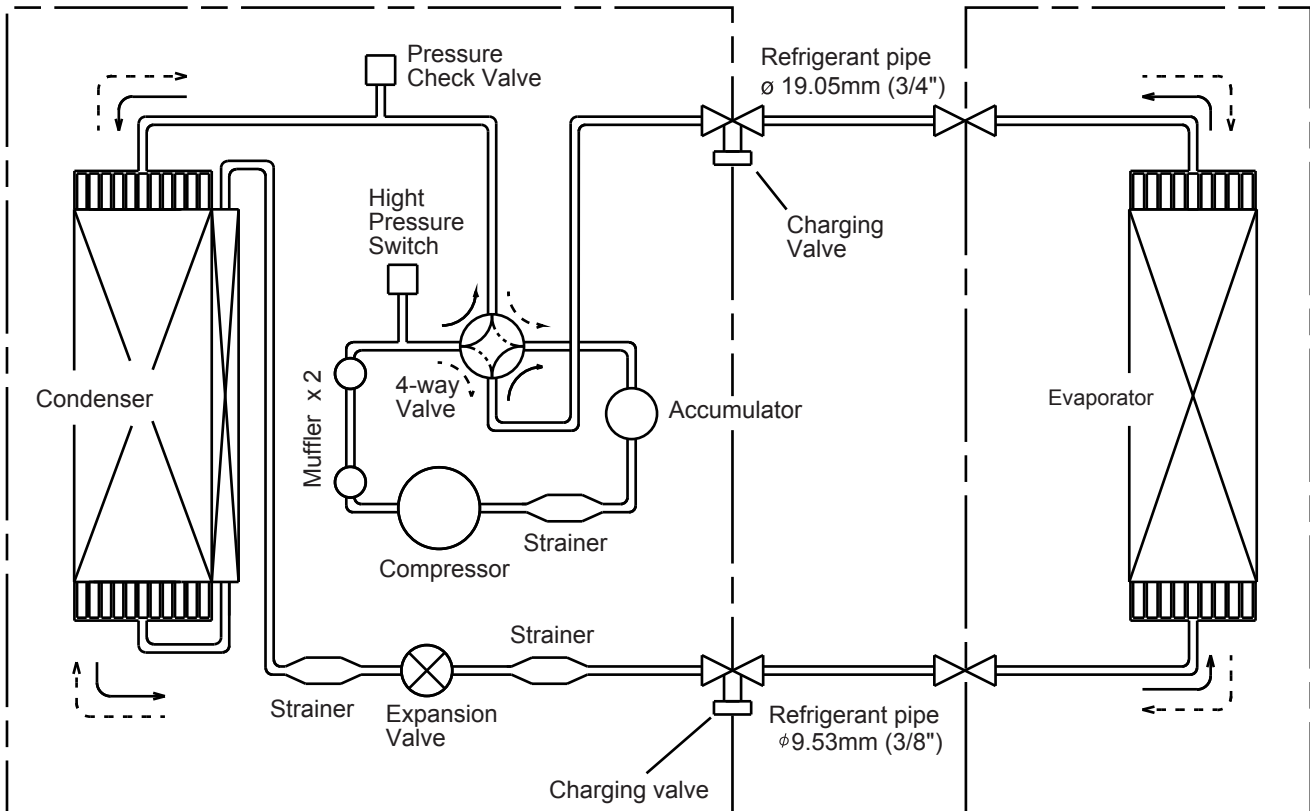
INDOOR UNIT



Models : AUG54UUAS / AOG54UMAYT

OUTDOOR UNIT

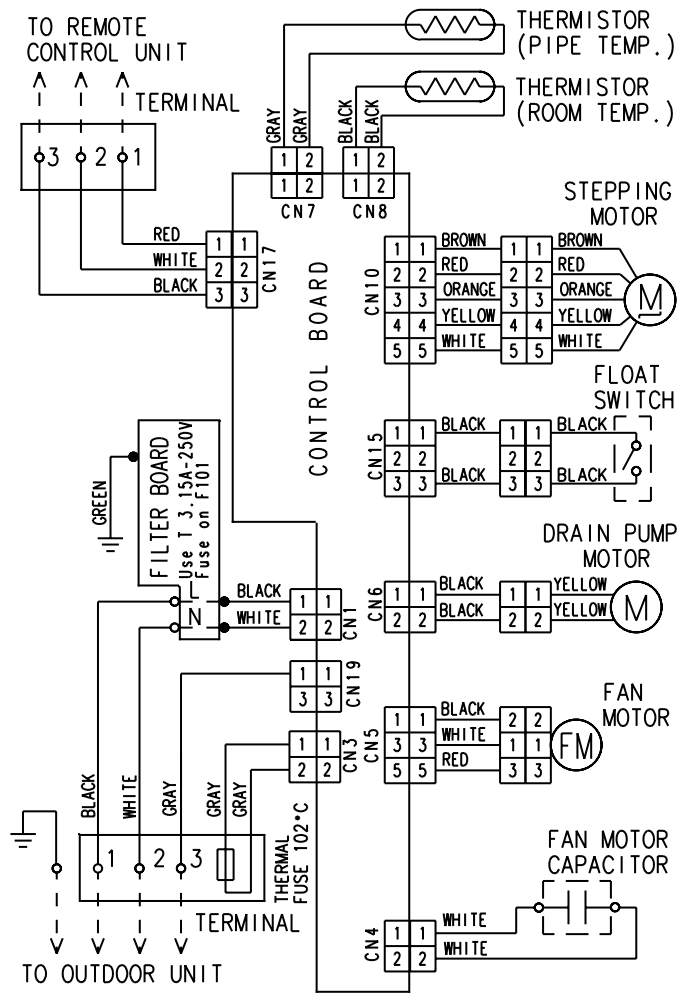
INDOOR UNIT



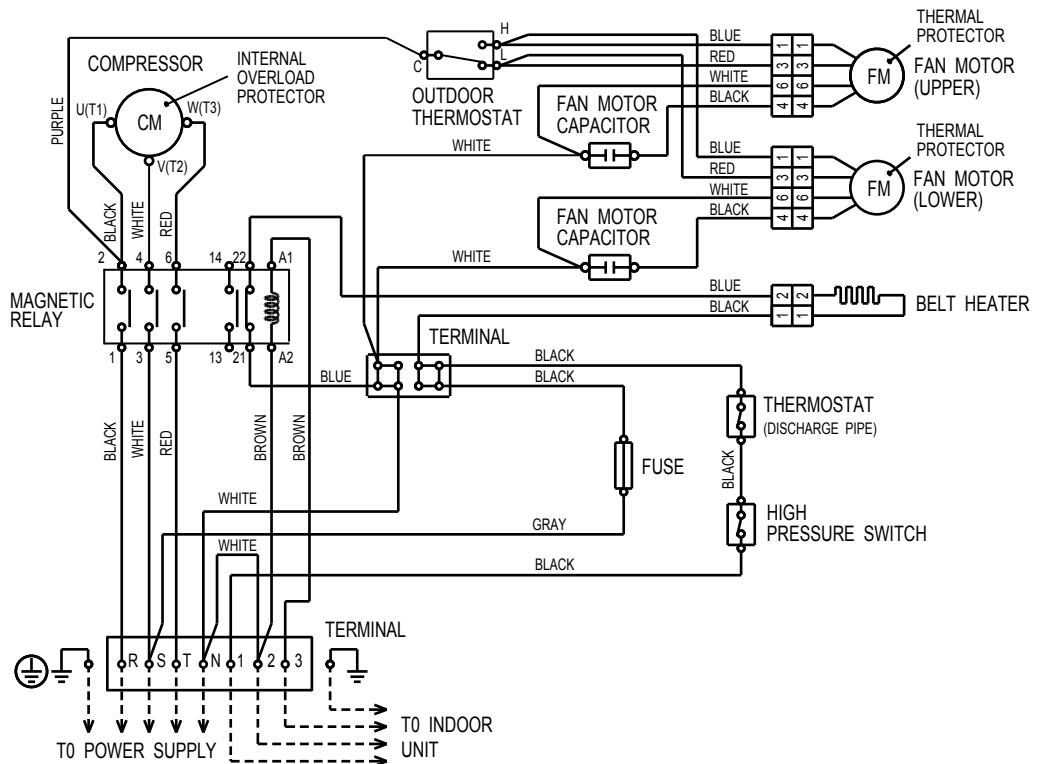
→ : COOL
 ---> : HEAT

CIRCUIT DIAGRAM

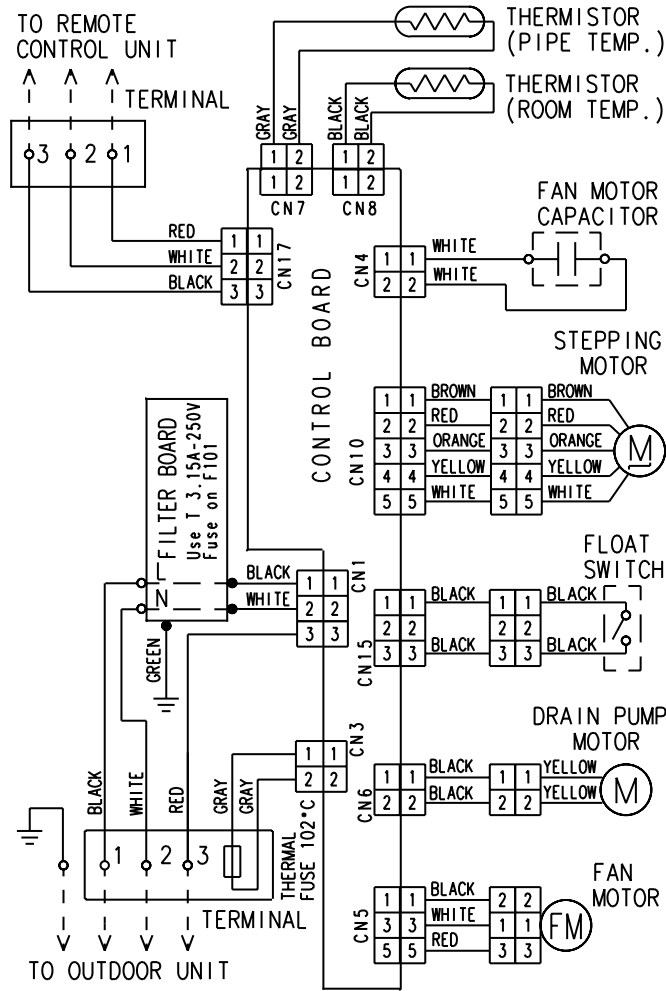
Model : AUG54FUAS



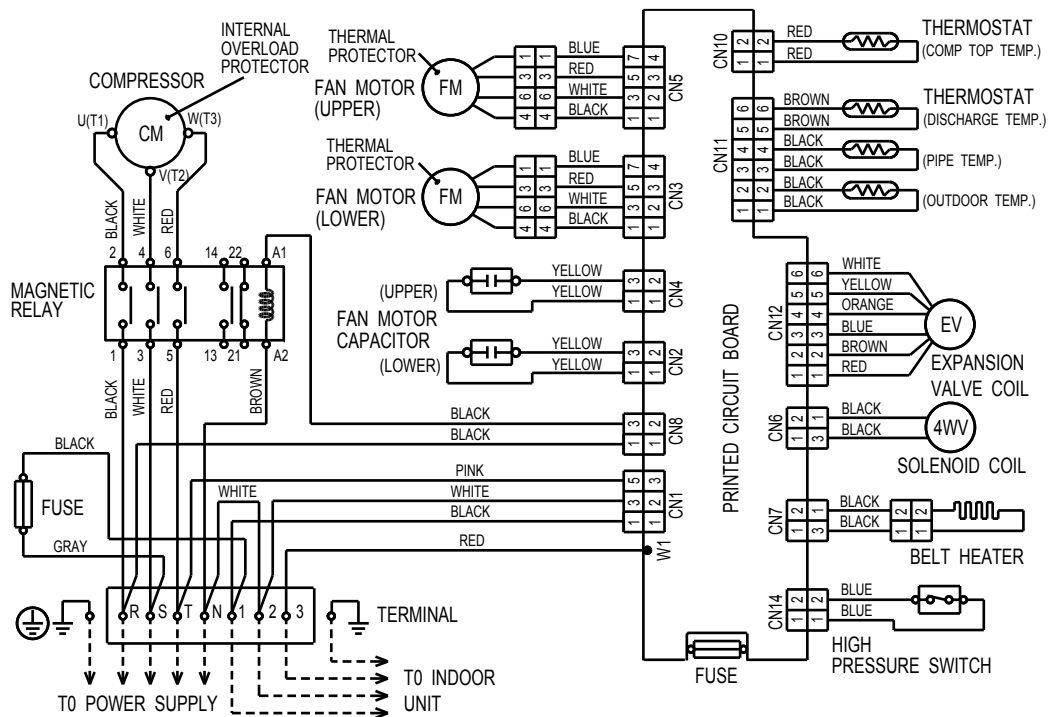
Model : AOG54FMAYT



Model : AUG54UUAS

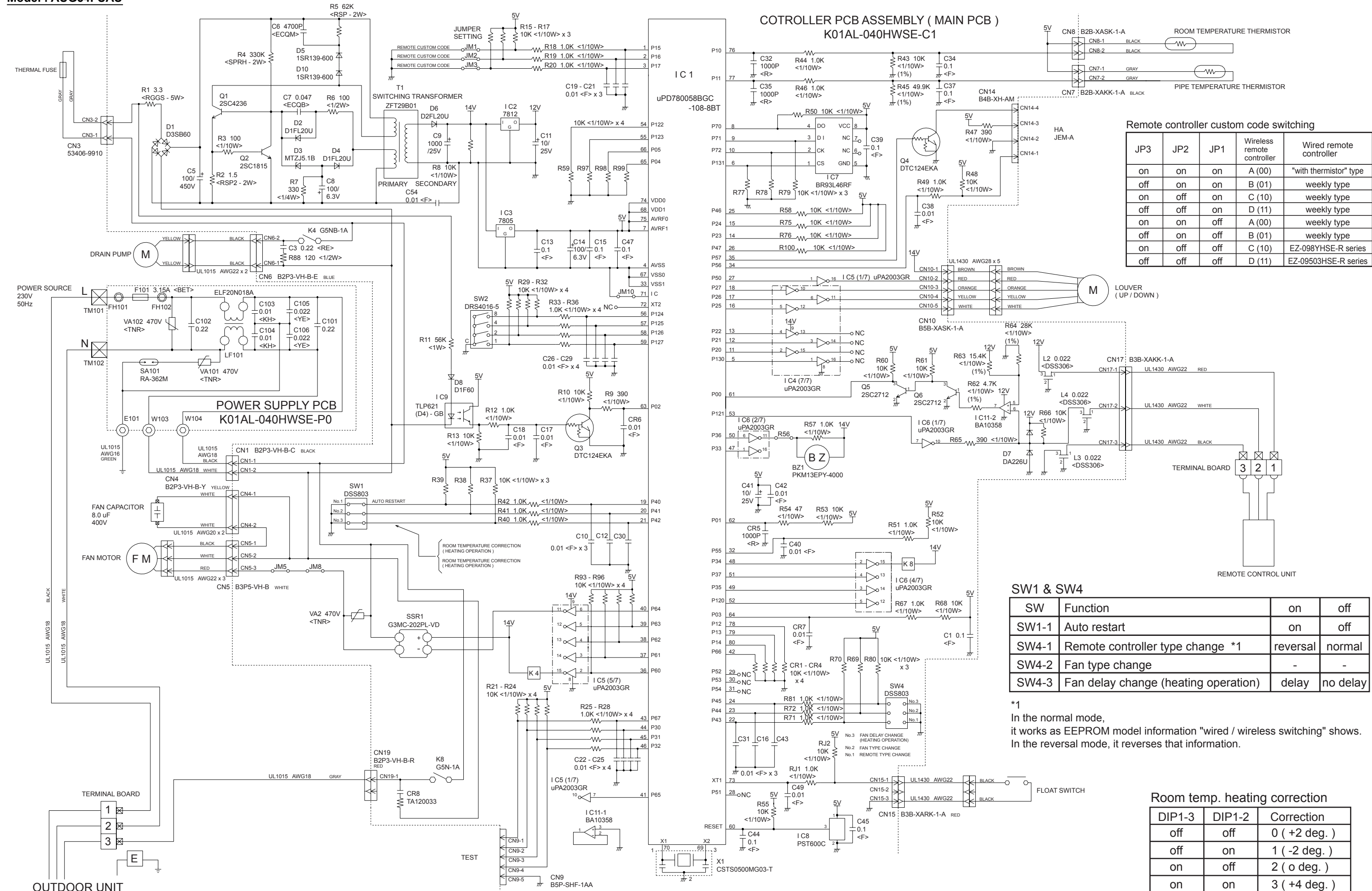


Model : AOG54UMAYT



INDOOR PCB CIRCUIT DIAGRAM

Model : AUG54FUAS



Remote controller custom code switching

JP3	JP2	JP1	Wireless remote controller	Wired remote controller
on	on	on	A (00)	"with thermistor" type
off	on	on	B (01)	weekly type
off	off	on	C (10)	weekly type
off	off	on	D (11)	weekly type
on	on	off	A (00)	weekly type
off	on	off	B (01)	weekly type
on	off	off	C (10)	EZ-098YHSE-R series
off	off	off	D (11)	EZ-09503HSE-R series

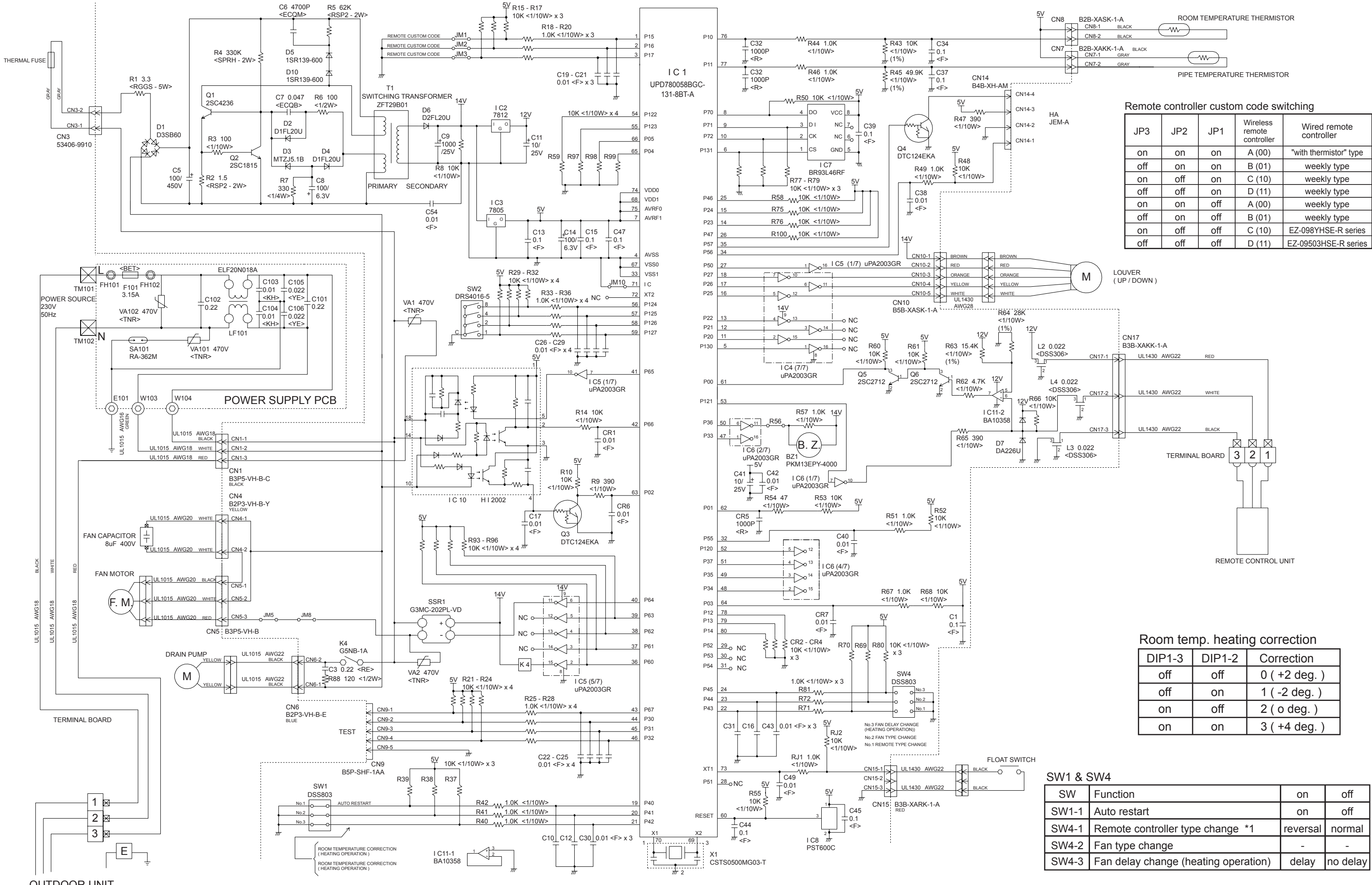
SW1 & SW4

SW	Function	on	off
SW1-1	Auto restart	on	off
SW4-1	Remote controller type change *1	reversal	normal
SW4-2	Fan type change	-	-
SW4-3	Fan delay change (heating operation)	delay	no delay

*1
In the normal mode, it works as EEPROM model information "wired / wireless switching" shows. In the reversal mode, it reverses that information.

Room temp. heating correction

DIP1-3	DIP1-2	Correction
off	off	0 (+2 deg.)
off	on	1 (-2 deg.)
on	off	2 (0 deg.)
on	on	3 (+4 deg.)



Remote controller custom code switching

JP3	JP2	JP1	Wireless remote controller	Wired remote controller
on	on	on	A (00)	"with thermistor" type
off	on	on	B (01)	weekly type
on	off	on	C (10)	weekly type
off	off	on	D (11)	weekly type
on	on	off	A (00)	weekly type
off	on	off	B (01)	weekly type
on	off	off	C (10)	EZ-098YHSE-R series
off	off	off	D (11)	EZ-09503HSE-R series

Room temp. heating correction

DIP1-3	DIP1-2	Correction
off	off	0 (+2 deg.)
off	on	1 (-2 deg.)
on	off	2 (0 deg.)
on	on	3 (+4 deg.)

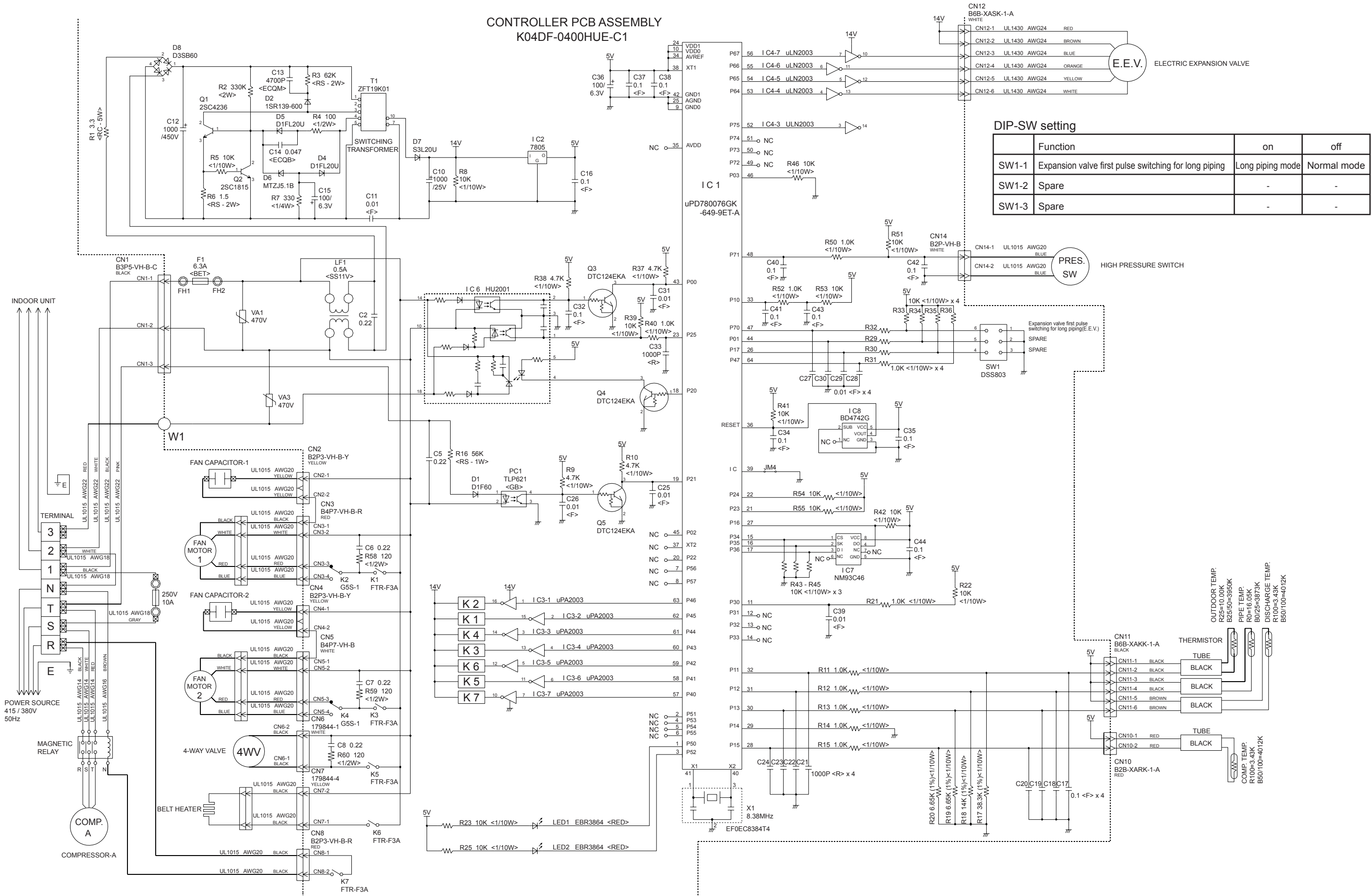
SW1 & SW4

SW	Function	on	off
SW1-1	Auto restart	on	off
SW4-1	Remote controller type change *1	reversal	normal
SW4-2	Fan type change	-	-
SW4-3	Fan delay change (heating operation)	delay	no delay

*1
In the normal mode, it works as EEPROM model information "wired / wireless switching" shows. In the reversal mode, it reverses that information.

OUTDOOR PCB CIRCUIT DIAGRAM

Model : AOG54UMAYT

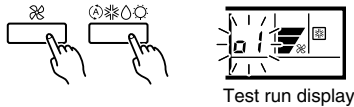


ERROR DISPLAY

CAUTION

Supply power to the crankcase heater for at least 12 hours before the start of operation in winter.

- Stop the air conditioner operation.
- Press the master control button and the fan control button simultaneously for 2 seconds or more to start the test run.



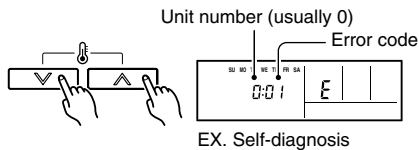
- Press the start/stop button to stop the test run.

[SELF-DIAGNOSIS]

When the error indication "E:EE" is displayed, follow the following items to perform the self-diagnosis. "E:EE" indicates an error has occurred.

1. REMOTE CONTROLLER DISPLAY

- Stop the air conditioner operation.
- Press the set temperature buttons \wedge / \vee simultaneously for 5 seconds or more to start the self-diagnosis. Refer to the following tables for the description of each error code.



- Press the set temperature buttons \wedge / \vee simultaneously for 5 seconds or more to stop the self-diagnosis.

Error code	Error contents
00	Communication error (indoor unit ↔ remote controller)
01	Communication error (indoor unit ↔ outdoor unit)
02	Room temperature sensor open
03	Room temperature sensor short-circuited
04	Indoor heat exchanger temperature sensor open
05	Indoor heat exchanger temperature sensor short-circuited
06	Outdoor heat exchanger temperature sensor open
07	Outdoor heat exchanger temperature sensor short-circuited
08	Power source connection error
09	Float switch operated
0A	Outdoor temperature sensor open
0b	Outdoor temperature sensor short-circuited

Error code	Error contents
0c	Discharge pipe temperature sensor or compressor temperature sensor open
0d	Discharge pipe temperature sensor or compressor temperature sensor short-circuited
0E	Outdoor high pressure abnormal
0F	Discharge pipe temperature or compressor temperature abnormal
11	Model abnormal
12	Indoor fan abnormal
13	Outdoor signal abnormal
14	Outdoor EEPROM abnormal

2. OUTDOOR UNIT LEDS

Heat & Cool model (reverse cycle) only

When a malfunction occurs in the outdoor unit, the LEDs on the circuit board light to indicate the error. Refer to the following table for the description of each error according to the LEDs.

LED layout



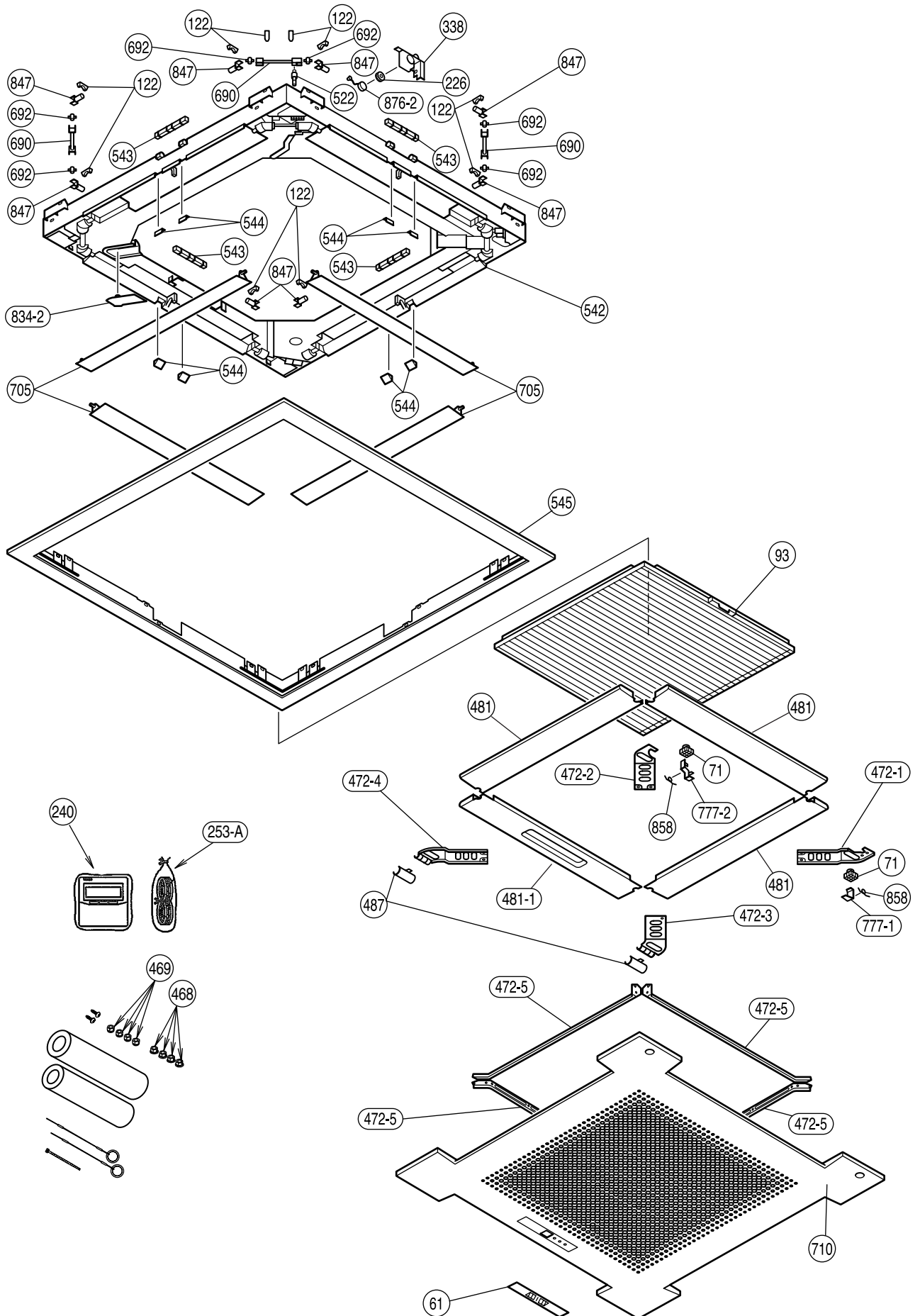
LED1	LED2	Error contents
flash	flash	Model abnormal or EEPROM abnormal
1 flash	Lighting	Power source connection error
2 flash	Lighting	Discharge temp. sensor error
3 flash	Lighting	Heat exchanger temp. sensor error
4 flash	Lighting	Outdoor temp. sensor error
5 flash	Lighting	Communication signal error
6 flash	Lighting	Indoor unit error
7 flash	Lighting	Discharge temp. abnormal
8 flash	Lighting	High pressure abnormal
9 flash	Lighting	Compressor temp. abnormal
10 flash	Lighting	Compressor temp. sensor error
Dislighting		No error. Protect operation

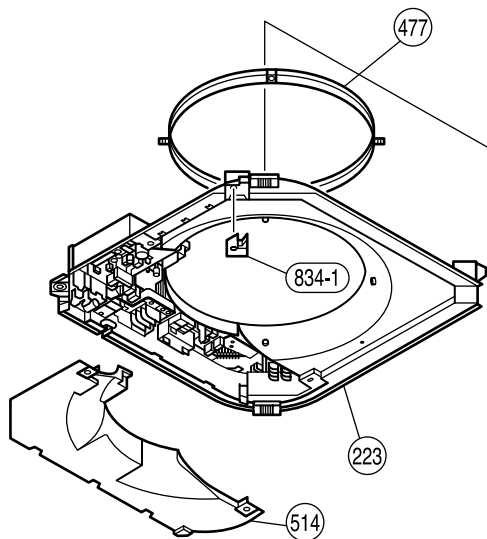
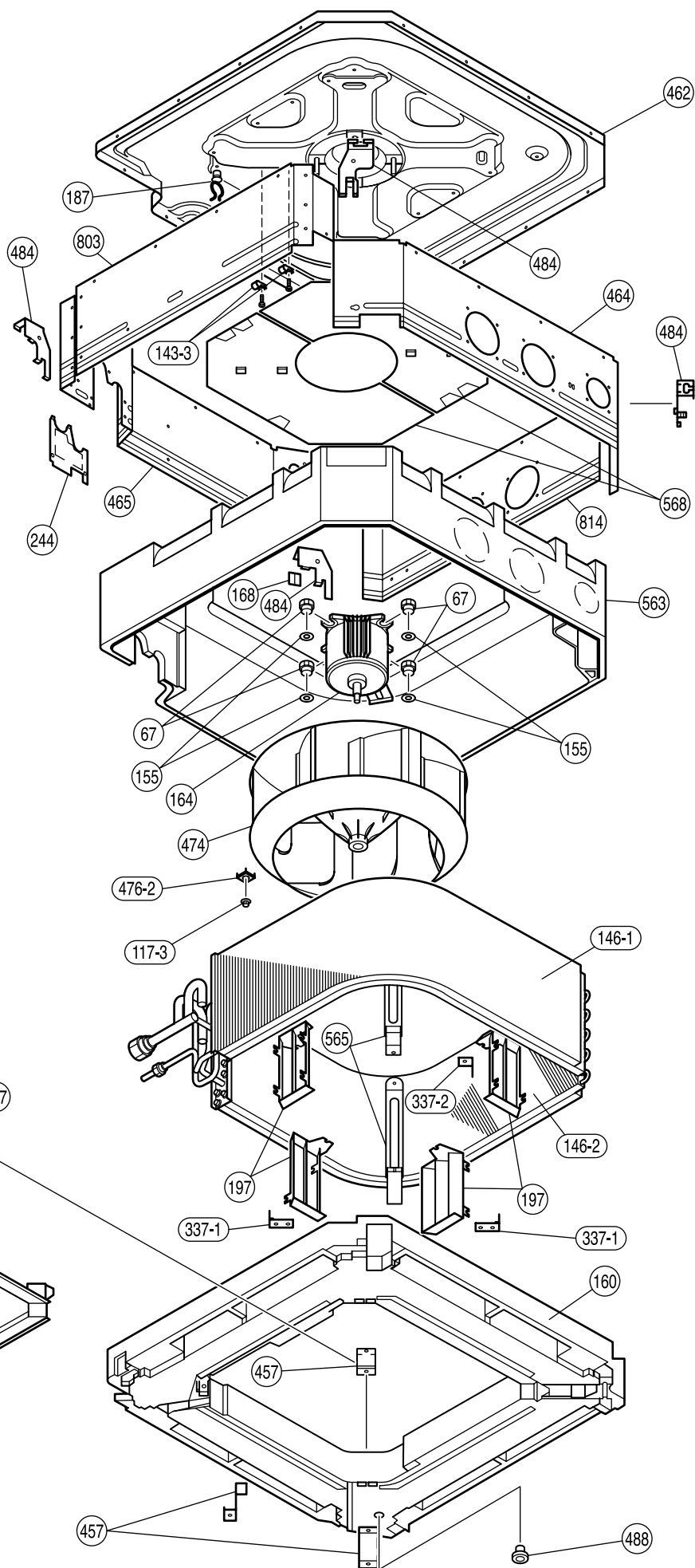
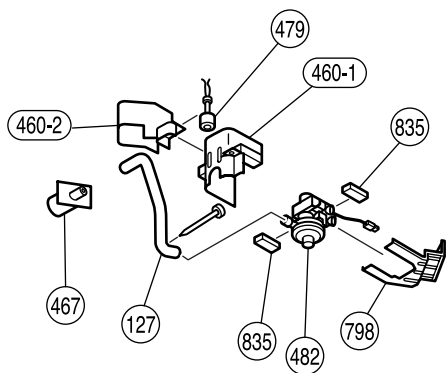
When the fault is cleared, the LED lamp goes off. However, for discharge pipe temperature abnormal and high pressure abnormal, the LED lamp lights continuously for 24 hours, as long as the power is not turned off.

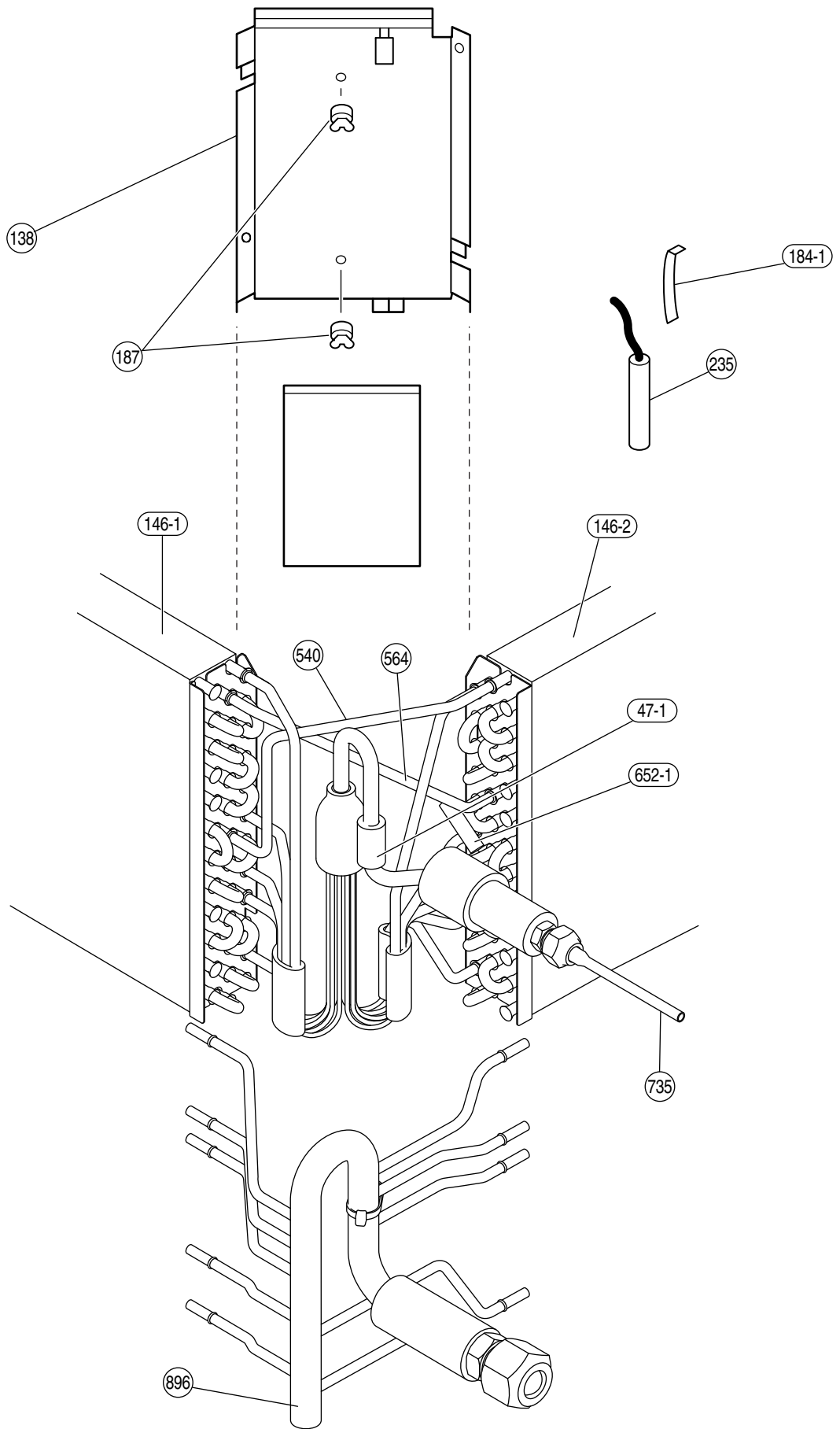
DISASSEMBLY ILLUSTRATION

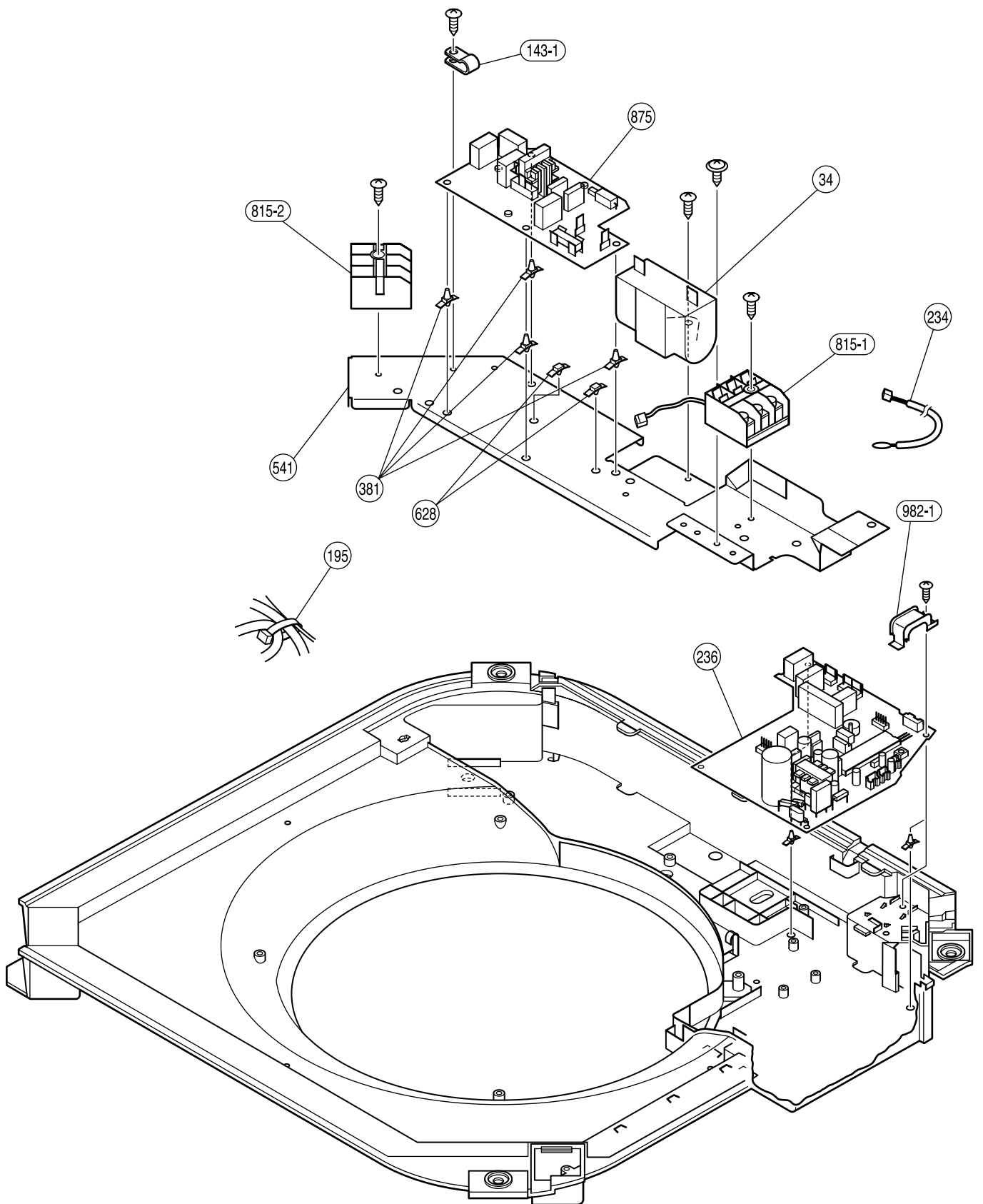
INDOOR UNIT

Models :
AUG54FUAS
AUG54UUAS

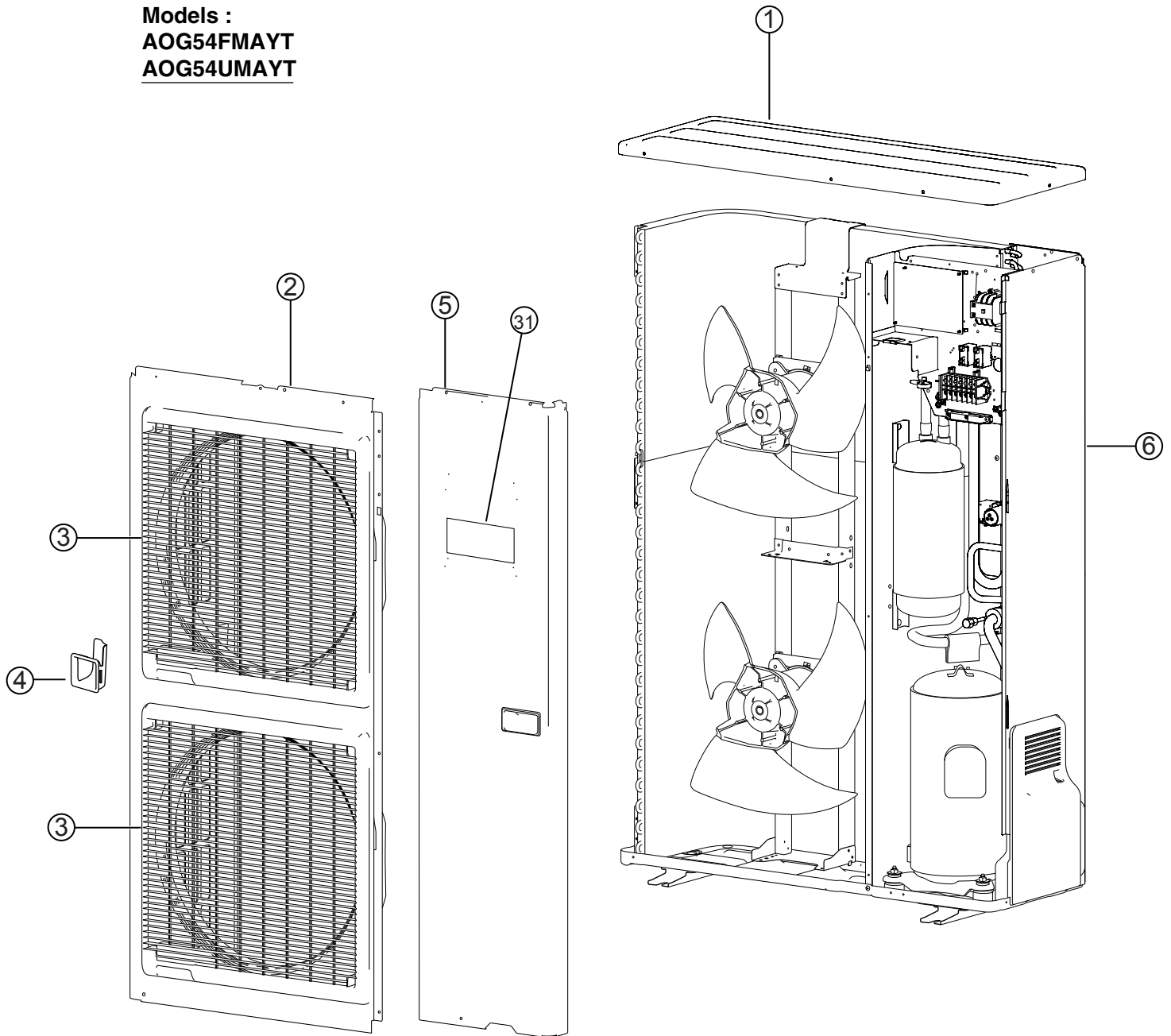




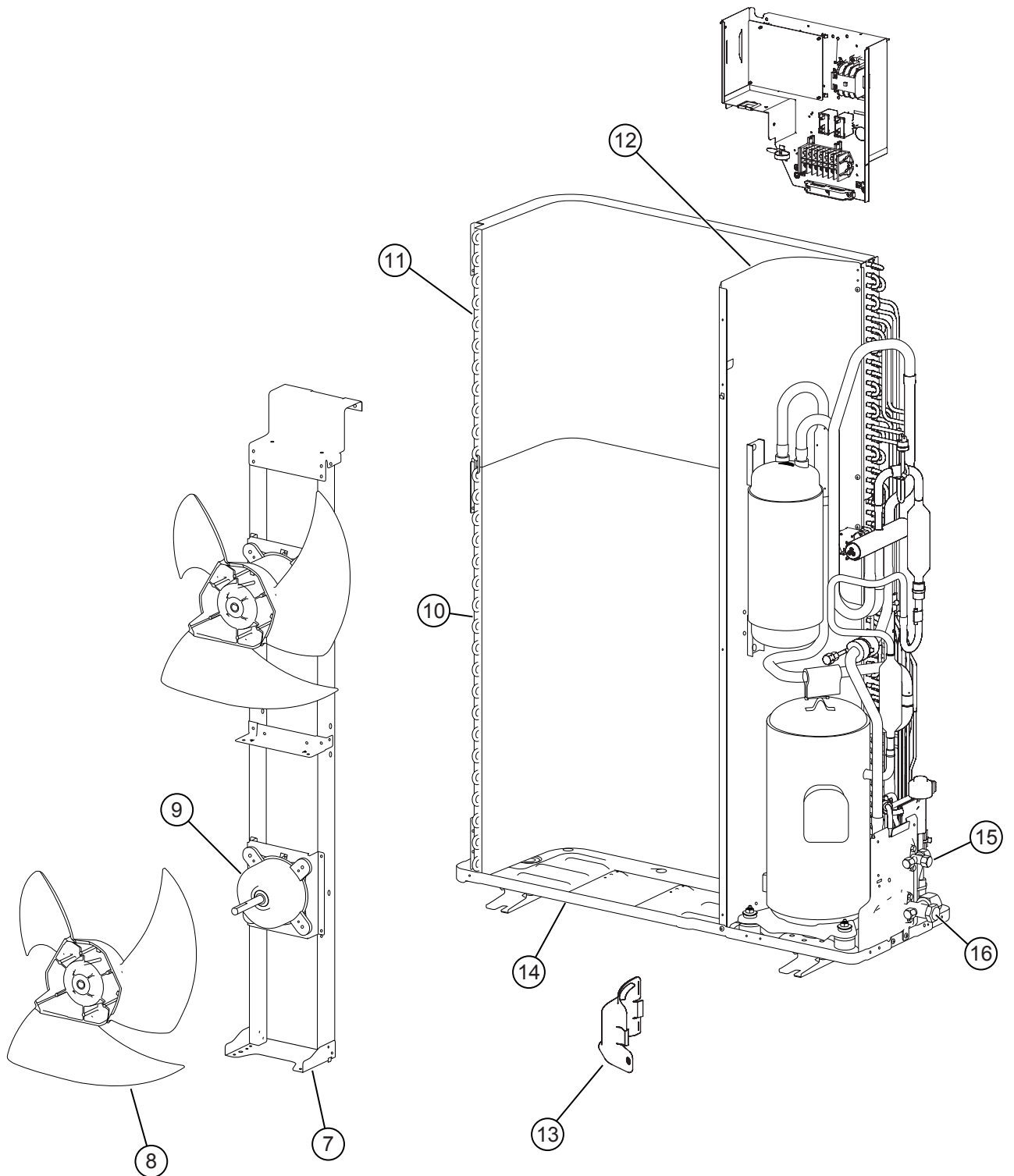




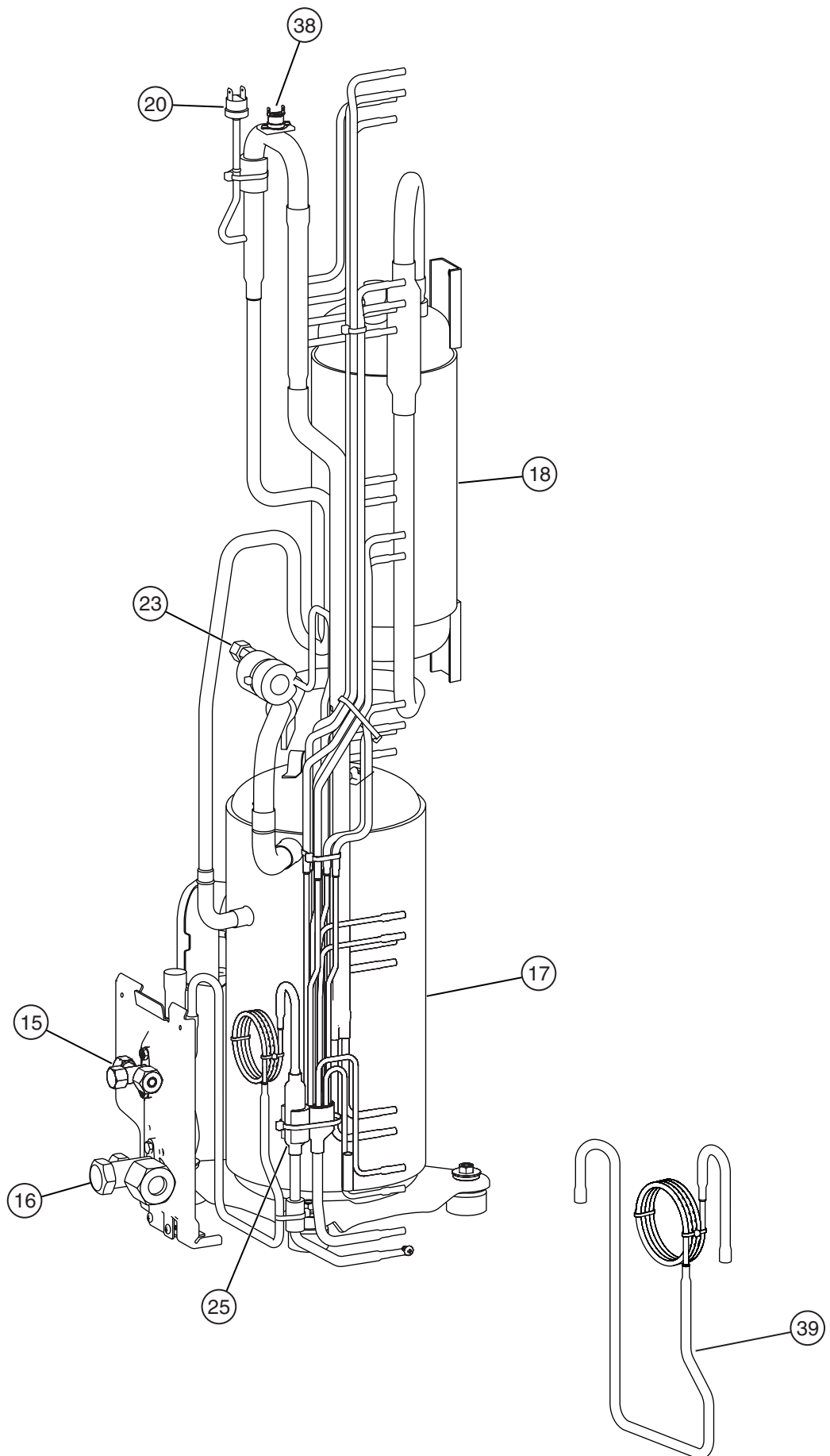
Models :
AOG54FMAYT
AOG54UMAYT



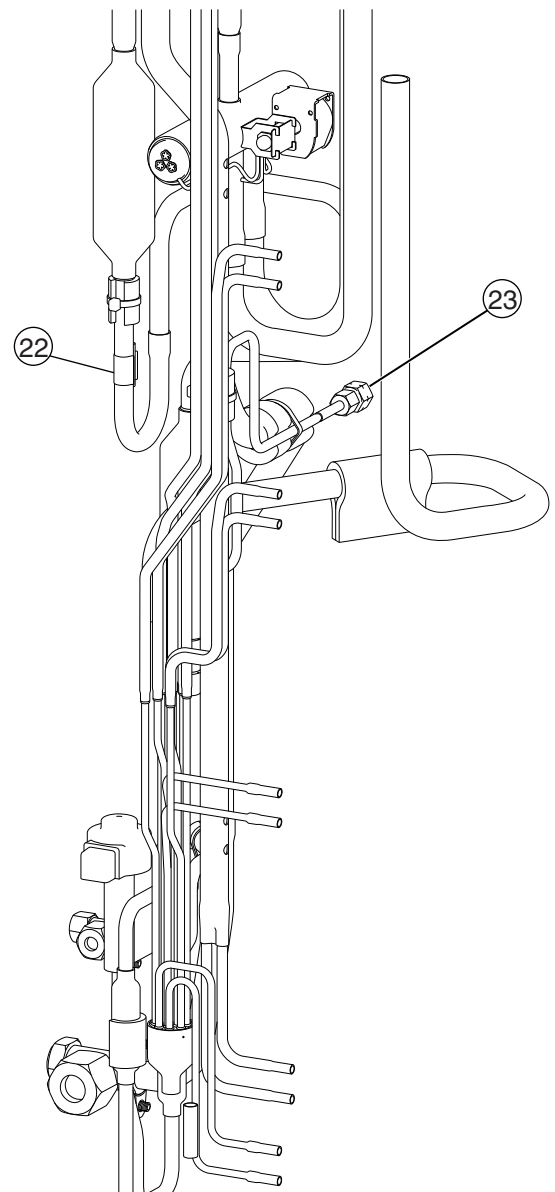
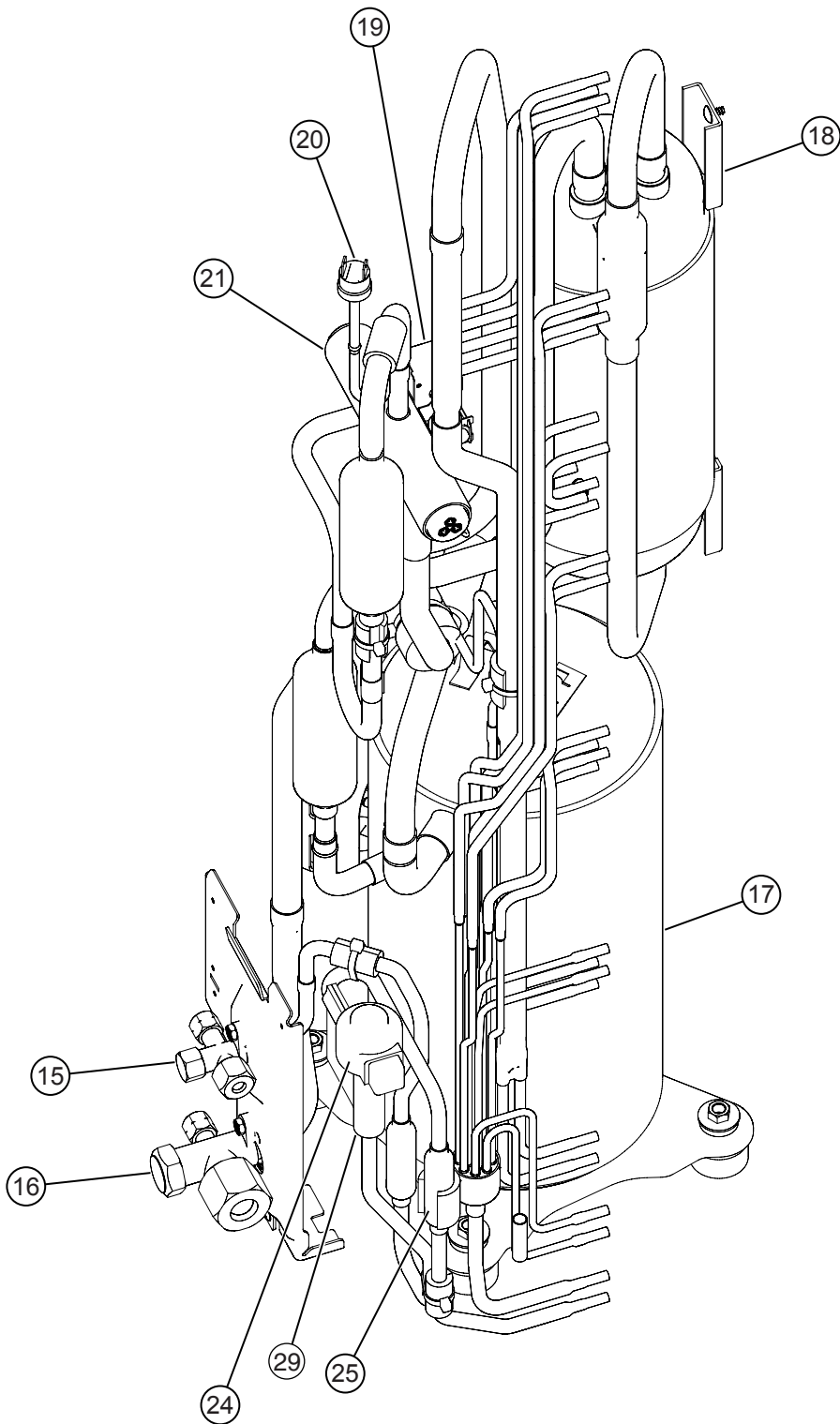
Models :
AOG54FMAYT
AOG54UMAYT



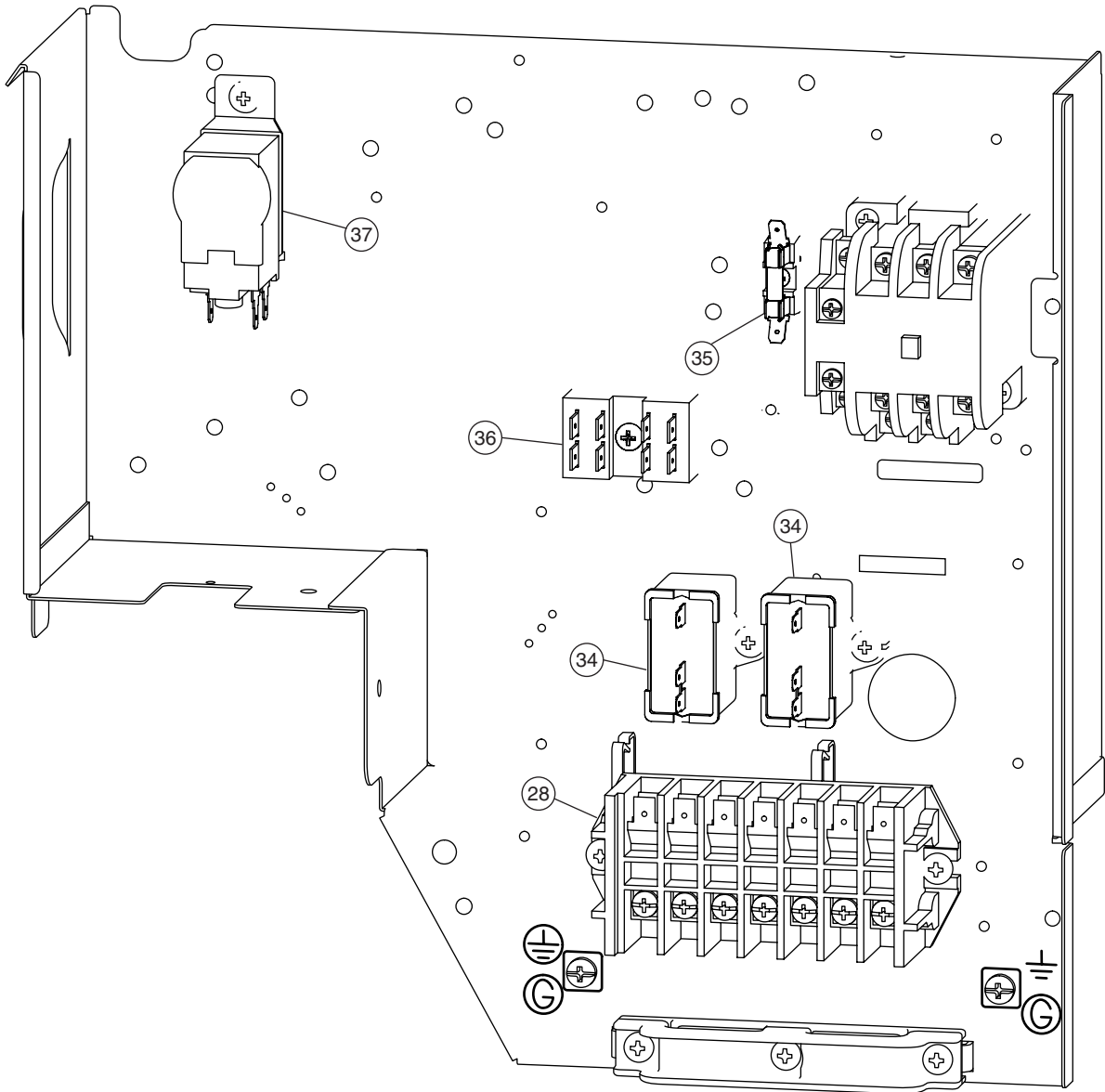
Model :
AOG54FMAYT



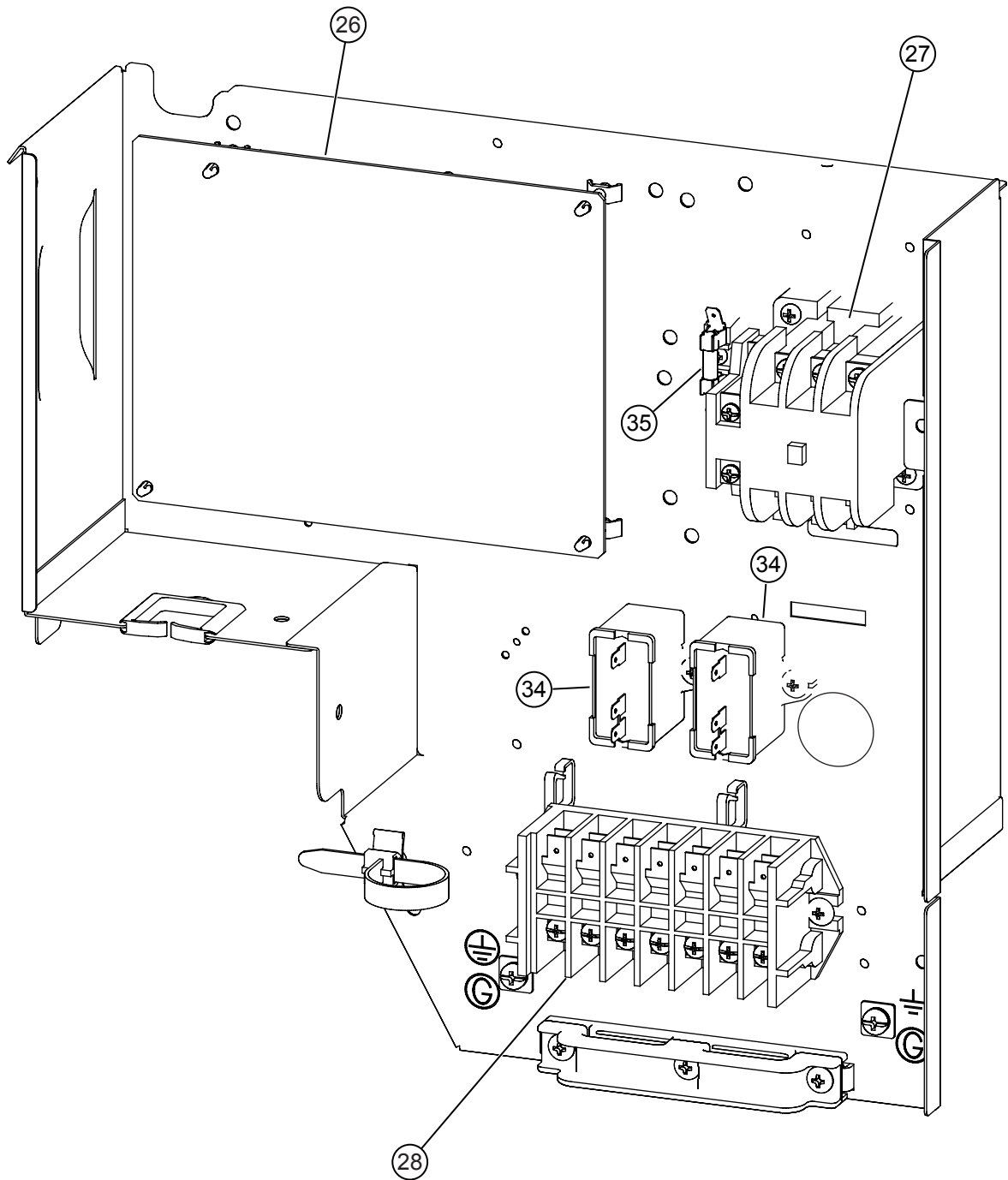
Model :
AOG54UMAYT



Model : AOG54FMAYT



Model : AOG54UMAYT



P A R T S L I S T

When you order parts, please make a photocopy of this page and fill the number of the parts in the "Order" column.

INDOOR UNIT

Ref. No.	Description	Part No.		Ord. Qty	Ref. No.	Description	Part No.		Ord. Qty
		AUG54FUAS	AUG54UJAS				AUG54FUAS	AUG54UJAS	
34	Capacitor (Fan Motor)	9703306068	9703306068		472-5	Grille Reinforcement.T-E	9362742009	9362742009	
47-1	Rubber (Discharge Pipe)	313194159807	313194159807		474	Tube Fan Assy	9362803014	9362803014	
61	Decoration Plate	9363131000	9363131000		476-2	Special Washer	9362756006	9362756006	
67	Rubber (Vibration-proof)	9362783002	9362783002		477	Bellmouth-B	9362774000	9362774000	
71	Grille Hook Holder	9362782005	9362782005		479	Float Switch	9703285004	9703285004	
93	Filter	9362766005	9362766005		481	Insulation (Grille)-A	9362780001	9362780001	
117-3	Hex. Nut w/Spring Washer	301721180114	301721180114		481-1	Insulation (Grille)-B	9362781008	9362781008	
122	Louver Support Holder	9362799003	9362799003		482	Pump Unit	9703125010	9703125010	
127	Drain Hose	9362784009	9362784009		484	Hook	9362736008	9362736008	
138	Separate Wall	9362737005	9362737005		487	Grille Hinge Wire	9362754002	9362754002	
143-1	Clamp NK-3N	313361274700	313361274700		488	Drain Pan Plug	313005174654	313005174654	
143-3	Clamp NK-9N	313209399700	313209399700		514	Control Box Cover	9362763004	9362763004	
146-1	Evaporator-A Assy	9373799047	9373799047		522	Joint Gear	9362772006	9362772006	
146-2	Evaporator-B Assy	9373800040	9373800040		540	Bypass Pipe-B	9371346069	9371346069	
155	Special Nut M6	9307615016	9307615016		541	Terminal Plate	9363642001	9363642001	
160	Drain Pan Assy	9362804004	9362804004		542	Panel Base	9362759014	9362759014	
164	Fan Motor Assy-IN	9601915010	9601915010		543	Panel Frame Holder	9362761017	9362761017	
168	Cabinet-E Sub Assy	9362831017	9362831017		544	Panel Base Holder	9362760010	9362760010	
184-1	Thermistor Spring-A	313728262708	313728262708		545	Panel Frame	9362758017	9362758017	
187	Clamp No. 1219	313361271706	313361271706		563	Insulation (Inner Box)	9362768009	9362768009	
195	Clamp SKB-100	313361275805	313361275805		564	Bypass Pipe-A Assy	9371324067	9371324067	
197	Wind Guide Board	9373444015	9373444015		565	Evaporator Holder Assy	9362802017	9362802017	
223	Control Box	9362762007	9362762007		568	Noise Insulation	9363143003	9363143003	
226	Motor Gear	9362764001	9362764001		628	Locking Spacer-B	313005446558	313005446558	
234	Room Temperature Thermistor	9703299025	9703299025		652-1	Thermistor Holder Pipe	313806262805	313806262805	
235	Pipe Temperature Thermistor	9703297014	9703297014		690	Joint-A	9362773003	9362773003	
236	Controller PCB Assy	9704557865	9704557865		692	Joint Shaft	9362771009	9362771009	
240	Remote Control Unit	9372266069	9372266069		705	Louver Sub Assy	9362836012	9362836012	
244	Pipe Cover	9362748001	9362748001		---	Intake Grille Sub Assy	9362818117	9362818117	
253-A	Wire Assy	9372714010	9372714010		710	Intake Grille	9362767019	9362767019	
337-1	Reinforcement (Evaporator)-A	9362749008	9362749008		735	Distributor Assy	9371325101	9371325101	
337-2	Reinforcement (Evaporator)-B	9362750004	9362750004		777-1	Grille Hook-A	9362779012	9362779012	
338	Motor Holder	9362765008	9362765008		777-2	Grille Hook-B	9362778015	9362778015	
381	Locking Spacer	313209391506	313209391506		798	Pump Hook Bracket	9362753005	9362753005	
457	Reinforcement (Drain Pan)	9362757003	9362757003		803	Cabinet-D	9362734004	9362734004	
460-1	Pump Cover-A	9362775007	9362775007		814	Cabinet-C	9362733007	9362733007	
460-2	Pump Cover-B	9362776004	9362776004		815-1	Terminal-3P	9306489069	9306489069	
462	Panel (Top) Assy	9362806015	9362806015		815-2	Terminal-3P	9703345012	9703345012	
464	Cabinet-A Assy	9362800013	9362800013		834-1	Wire Cover-A	9362789004	9362789004	
465	Cabinet-B Assy	9362801010	9362801010		834-2	Wire Cover-B	9362788007	9362788007	
467	Drain Port	9362786003	9362786003		835	Cushion Rubber (Pump)	9362777001	9362777001	
468	Special Nut-A (Large)	313005446653	313005446653		847	Louver Supporter	9362770019	9362770019	
469	Special Nut-B (Small)	313005446759	313005446759		858	Grille Spring	9362755009	9362755009	
472-1	Grille Reinforcement.T-A	9362738002	9362738002		875	Power Supply PCB Assy	9704561091	9704561091	
472-2	Grille Reinforcement.T-B	9362739009	9362739009		876-2	Step Motor	9360307019	9360307019	
472-3	Grille Reinforcement.T-C	9362740005	9362740005		896	Coupling Pipe Assy	9373038177	9373038177	
472-4	Grille Reinforcement.T-D	9362741002	9362741002		982-1	Cord Clamp	9356857009	9356857009	





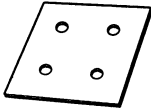
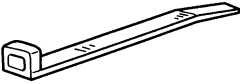

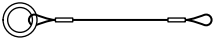
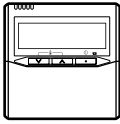
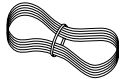
When you order parts, please make a photocopy of this page and fill the number of the parts in the "Order" column.

OUTDOOR UNIT

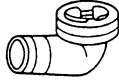


Ref. No.	Description	Part No.		Ord. Qty	Ref. No.	Description	Part No.		Ord. Qty
		AOG54FMAYT	AOG54UMAYT				AOG54FMAYT	AOG54UMAYT	
1	Top Panel Sub Assy	9374417018	9374417018		21	4-Way Valve	---	9970035012	
2	Front Panel-X, Painted	9374094028	9374094028		22	Discharge Temperature Thermistor	---	9900277017	
3	Fan Guard	9374330010	9374330010		23	Check Valve Assy	9374274017	9374274017	
4	Grip Side	9374173013	9374173013		24	Coil (Expansion Valve)	---	9900190026	
5	Service Panel Sub Assy	9374415014	9374415014		25	Strainer Assy	9372524015	9372524015	
6	Right Panel Sub Assy	9374416011	9374416011		26	Controller PCB Assy	---	9705677012	
7	Motor Bracket Sub Assy	9374418015	9374418015		27	Magnetic Relay	---	9900227012	
8	Propeller Fan Assy	9366378013	9366378013		28	Terminal-7P	9363276039	9363276039	
9	Fan Motor Assy-OUT	9601671060	9601671060		29	Expansion Valve	---	9900170028	
10	Condenser-A Assy	9374433025	9374433018		31	Emblem-Rear	9372171011	9372171011	
11	Condenser-B Assy	9374434022	9374434015		34	Capacitor (Fan Motor)	9900270049	9900270049	
12	Separate Wall-X	9374135011	9374135011		35	Fuse	0600222529	0600222529	
13	Cap Foot	9374345014	9374345014		36	Terminal-2P	9701971015	---	
14	Base Assy	9374166022	9374166022		37	Outdoor Thermostat	9900275013	---	
15	3-Way Valve Assy	9372205044	9372205044		38	Thermostat Overheat	9354061002	---	
16	3-Way Valve Assy	9372205099	9372205099		39	Capillary Assy	9372197332	---	
17	Compressor Assy	9374250011	9374250011		---	Capillary Holder Rubber	313394274808	313394274808	
18	Accumulator Assy	9371615011	9371615011		---	Belt Heater	9361140240	9361140240	
19	Solenoid	---	9900165055		---	Valve Cover	9374174010	9374174010	
20	Pressure Switch	9900276010	9900186012		---	Muffler	---	9372369036	

STANDARD ACCESSORIES

INDOOR UNIT ACCESSORIES

Name and Shape	Q' ty	Application
Coupler heat insulation 	2	For indoor side pipe joint
Screw 	2	For installing the remote controller
Special nut A (large flange) 	4	For installing indoor unit
Special nut B (small flange) 	4	For installing indoor unit
Template 	1	For ceiling hole cutting
Binder 	1 (small)	For remote controller and remote controller cord binding
Blower cover insulation 	2	For discharged air
Hook wire 	2	For installing intake grille
Remote controller 	1	
Remote controller cord 	1	For connecting the remote controller

OUTDOOR UNIT ACCESSORIES

Name and Shape	Q' ty	Application
Drain pipe 	1	For outdoor unit drain piping work (May not be supplied, depending on the model.)
Drain cap 	2	
Insulation (seal) 	1	For filling in a gap at the entrance of connection cords

Please contact Overseas Marketing Division directly about the following options.

ADDITIONAL GRILLE ASSY: UTG-AGEA-W (P/N 9002230002)
Simple remote controller: UTB-YPB (P/N 9077582006)

